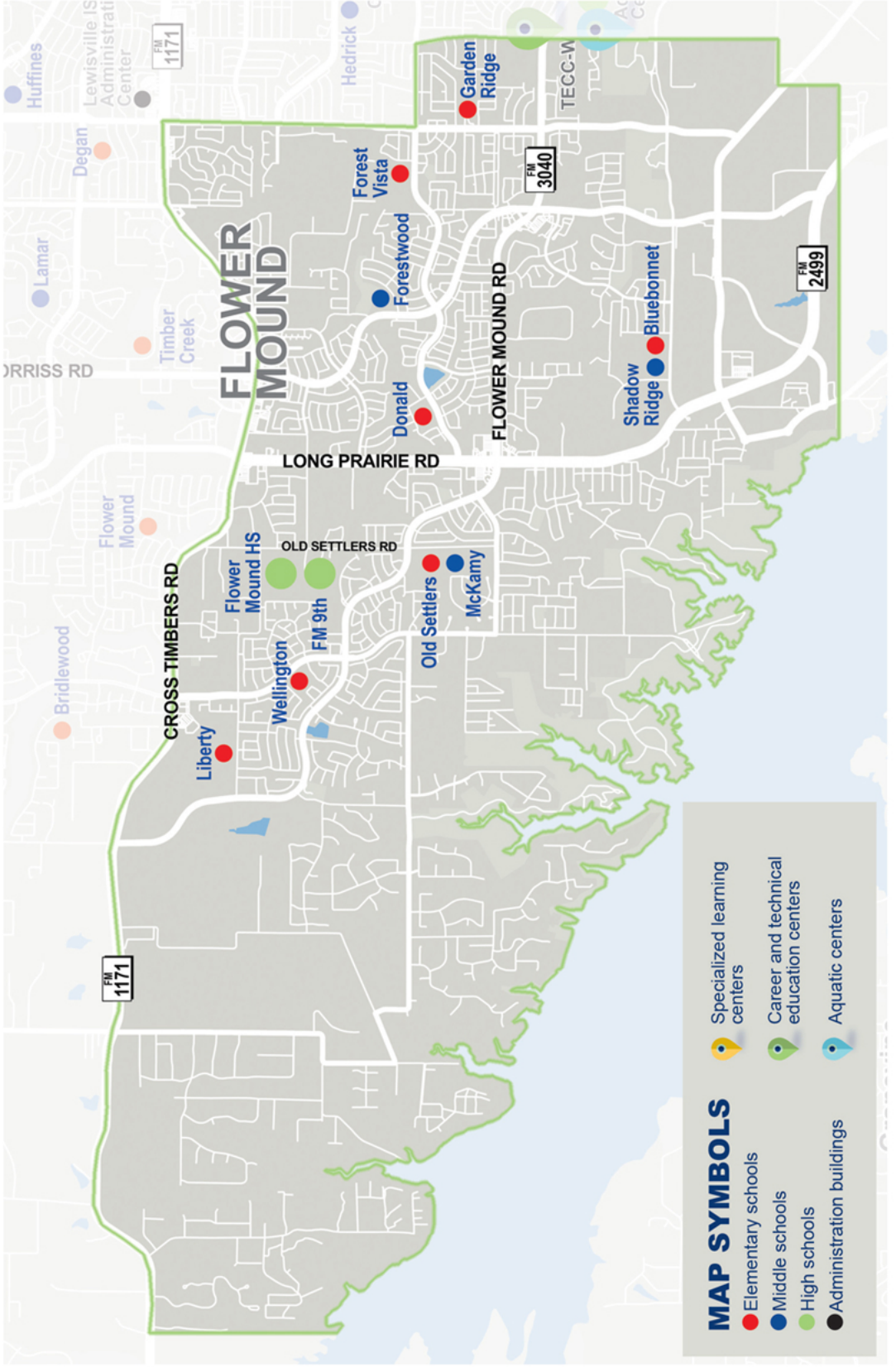


FLOWER MOUND HIGH SCHOOL



HOME OF THE JAGUARS



MAP SYMBOLS

- Elementary schools
- Middle schools
- High schools
- Administration buildings
- Specialized learning centers
- Career and technical education centers
- Aquatic centers

FLOWER MOUND

LONG PRAIRIE RD

FLOWER MOUND RD

CROSS TIMBERS RD

Flower Mound HS

Wellington

FM 9th

Old Settlers

McKamy

OLD SETTLERS RD

Donald

Forestwood

Forest Vista

Garden Ridge

Shadow Ridge

Bluebonnet

FM 1171

FM 3040

FM 2499

TECC-W

MORRIS RD

Lewisville IS Administrative Center

Huffines

Degan

Lamar

Timber Creek

Hedrick

Bridlewood

Liberty

Flower Mound

FM 1171

AC CE

Flower Mound High School

Campus Profile

SCHOOL HOURS ONLINE

8:20 a.m. to 3:35 p.m. **GRADES** 10th through 12th
lisd.net/fmhs | facebook.com/flowermoundhs | twitter.com/flowermoundhs

STUDENT INFORMATION

2,773 Students
96.6% Average daily attendance

STAFF INFORMATION

205.18 Total staff members
14.9 Average number of years teaching experience
9.9 Average number of years teaching in LISD schools

PROFESSIONAL LEARNING

Total number of hours the staff spent developing their job skills last year

14,825

62.8

Average professional learning hours per Lewisville ISD staff member



OBSERVATION

1,125 Number of administrator visits to observe class instruction

161 Average number of classroom visits per administrator

At Flower Mound High School, we believe:

Every child is gifted in a special way. With the support of their families and school, each student can reach his or her highest potential. Our teachers and staff foster relationships built on encouragement, support and mutual respect.

We are committed to nurturing every child's social and emotional well-being. Our students are encouraged to challenge themselves to reach their own personal excellence in academic, artistic and/or athletic endeavors. By building opportunities for success, our students are well equipped for the ever-changing future. Our school mission is, "Inspire Learning – Build Community – Empower All."

COLLEGE READINESS

Average combined scores for 2020 college entrance exams

1243 | **26.3**
 SAT | ACT

Enrolled in AP, Pre-AP or dual credit courses **62%**

GRADUATION RATE

Percent of graduates from the class of 2020

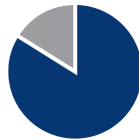
99.7%



Percent of students whose test scores indicate they are college and career ready.



SAT Reading/Writing
95%



SAT Math
84%



ACT English Comp
92%



ACT Algebra
81%



ACT Social Science
81%



ACT Biology
70%



PSAT/NMSQT Reading/Writing
91.4%



PSAT/NMSQT Math
72.3%

CLUBS

Clubs provide opportunities for students to engage in learning of their choice beyond the classroom.

Some of our clubs include Art Club, Breakfast Buddies, Chess Club, Circle of Friends, FMHS Book Battle Club, Globally Green, Interact, International Thespian Society, Junior World Affairs Council, Mu Alpha Theta, and National Honor Society.



What do our parents think?

In April 2021, parents were surveyed about the campus their child attends. Values represent the percentage of respondents who agree. Based on 556 responses.

Are satisfied overall	94.2%
The school staff cares	93.0%
Students know how to get help	89.0%
I know about my child's grades	91.2%
School is safe	95.3%
Students are happy	90.3%
Staff is encouraging	91.5%
Students who fall behind can get help	85.6%
School work is important	84.2%
Students feel welcomed	89.7%
School communicates effectively	92.1%
The staff is approachable	92.1%
They value culture and individual needs	86.3%

ARTS AND ATHLETICS



49%

Participation in athletics or physical education

47%

Participation in fine arts such as band or theater

PROGRAMS

Our campus offers unique programs to help our students become better learners, leaders, and friends. Some of ours include Student Council, Robotics, Academic Decathlon, PSAT Team, Student Ambassadors, Air Force Junior ROTC, Athletes for Literacy, UIL Academic Teams, We Dine Together, and Athletics and Fine Arts.

AWARDS AND RECOGNITIONS

- 4th Place in UIL Lone Star Cup Class 6A
- 2021 UIL State Champions in Girls Soccer
- 2020 UIL State Champions in Girls Cross Country
- 2021 State Champions in Girls Water Polo
- 2021 UIL State Bronze Medalist in Softball
- 2020 UIL State Bronze Medalist in Volleyball
- 2020 UIL State Bronze Medalist in Marching Band
- 2021 Finalist for the American Prize in Choir
- 2021 UIL State Team Champions in Social Studies
- Numerous State Champions in individual athletic and academic contests
- 2019 Rose Bowl Parade Invitation for Marching Band
- Numerous TMEA All-State Musicians
- More than 30 National Merit Finalists

What do our students think?

In April 2021, seniors were asked about their experiences in the district, future readiness and post-graduation plans.



Attend college	95.5%
Join the military or attend a service academy	1.8%
Work full time	8.0%
Attend technical or trade school	2.7%
Attain industry certification	1.8%
Other	2.0%
Well-prepared for the future	91.2%
Satisfied with their LISD education	93.5%

FLOWER MOUND HIGH SCHOOL

Home of the Jaguars, Flower Mound, Texas

Chad Russell, Principal



Flower Mound High School 9th Grade Campus Profile

SCHOOL HOURS ONLINE

8:20 a.m. to 3:35 p.m. **GRADES** 9th grade
lisd.net/fmhs9 | facebook.com/FMHS9th | twitter.com/FMHS9

STUDENT INFORMATION

909 Students
96.6% Average daily attendance

STAFF INFORMATION

51 Total staff members
13.0 Average number of years teaching experience
8.8 Average number of years teaching in LISD schools

PROFESSIONAL LEARNING

Total number of hours the staff spent developing their job skills last year

4,329

65.6

Average professional learning hours per Lewisville ISD staff member



OBSERVATION

337 Number of administrator visits to observe class instruction

112 Average number of classroom visits per administrator

At Flower Mound 9th Grade Campus, we believe:

- A collaborative campus culture results in connected, real-world learning
- Varied and engaging learning experiences are essential for lifelong learning
- Our students, staff and community are our greatest assets and resources

We are committed to providing a creative space where students are challenged to use their unique learning styles and the resources of our community to pursue engaging, individual, and collaborative experiences. At FM9, we will inspire innovative, lifelong learners who desire to contribute to the world in meaningful ways. Our students are the leaders of tomorrow and shining examples of learners today.

COLLEGE READINESS

Average combined scores for 2020 college entrance exams

1243 | **26.3**
 SAT | ACT

Enrolled in AP, Pre-AP or dual credit courses **68%**

GRADUATION RATE

Percent of graduates from the class of 2020

99.7%



Percent of students whose test scores indicate they are college and career ready.



SAT Reading/Writing **95%**



SAT Math **84%**



ACT English Comp **92%**



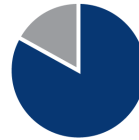
ACT Algebra **81%**



ACT Social Science **81%**



ACT Biology **70%**



PSAT/NMSQT Reading/Writing **91.4%**



PSAT/NMSQT Math **72.3%**

CLUBS

Clubs provide opportunities for students to engage in learning of their choice beyond the classroom.

Some of ours include National Honor Society, Student Council, The Garden Gnomes, Circle of Friends, Air Force JROTC, UIL Academic Team, Humans of Flower Mound, Robotics Team, Bass Fishing Team, Flower Mound Future Medical Leaders, DECA, and Art Club.



What do our parents think?

In April 2021, parents were surveyed about the campus their child attends. Values represent the percentage of respondents who agree. Based on 147 responses.

Are satisfied overall	92.5%
The school staff cares	94.6%
Students know how to get help	89.8%
I know about my child's grades	90.5%
School is safe	94.6%
Students are happy	89.8%
Staff is encouraging	89.8%
Students who fall behind can get help	83.7%
School work is important	81.6%
Students feel welcomed	89.8%
School communicates effectively	90.5%
The staff is approachable	91.2%
They value culture and individual needs	85.7%

ARTS AND ATHLETICS



80%

Participation in athletics or physical education

75%

Participation in fine arts such as band or theater

PROGRAMS

Our campus offers unique programs to help our students become better learners, leaders, and friends.

Some of our programs include the following:

- Band
- Choir
- Orchestra
- Theater
- Honors and Advanced Placement Courses
- Art
- Career and Technology Programs
- Athletics

AWARDS AND RECOGNITIONS

- 2018 Distinguished Teaching Award for K-12
- National Council of Geographic Education
- 2016 Texas Outstanding Teaching of Humanities Award
- ENERGY STAR certified school
- Voted Denton County Best Public High School

What do our students think?

In April 2021, seniors were asked about their experiences in the district, future readiness and post-graduation plans.



Attend college	95.5%
Join the military or attend a service academy	1.8%
Work full time	8.0%
Attend technical or trade school	2.7%
Attain industry certification	1.8%
Other	2.0%
Well-prepared for the future	91.2%
Satisfied with their LISD education	93.5%

FLOWER MOUND HIGH SCHOOL 9TH GRADE CAMPUS

Home of the Jaguars, Flower Mound, Texas

Jeff Brown, Principal





Forestwood Middle School STEM Campus Profile

SCHOOL HOURS ONLINE

8:55 a.m. to 4:10 p.m. **GRADES** 6th through 8th grade

lisd.net/forestwood | facebook.com/forestwoodms | twitter.com/ForestwoodMS

STUDENT INFORMATION

895	Students
97.3%	Average daily attendance

STAFF INFORMATION

71.85	Total staff members
14.8	Average number of years teaching experience
10.2	Average number of years teaching in LISD schools

PROFESSIONAL LEARNING

Total number of hours the staff spent developing their job skills last year

5,298



Average professional learning hours per Lewisville ISD staff member

248

OBSERVATION

Number of administrator visits to observe class instruction

83 Average number of classroom visits per administrator

What we believe

At Forestwood Middle School, we are proud of our school where students show pride through loyalty, behavior and scholarship. Forestwood is not only a place to be, but a place to thrive. We challenge each student to strive to reach his or her personal best. At Forestwood, we believe:

- Education is a collaborative effort involving the entire community
- Teaching with passion promotes learning with passion
- All students can learn; all students can achieve
- We all have basic needs: love and belonging, freedom of choice, safety, power and fun
- Students are active participants in their own education today leading to their future

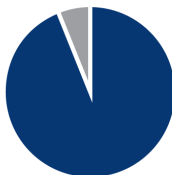
At Forestwood, our vision is a learning community that challenges all members to reach their individual potential and prepares them to realize their unique role in a caring community.



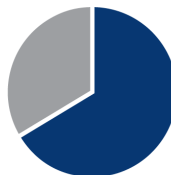
ACADEMIC PERFORMANCE

PSAT SCORES AND ADVANCED COURSES

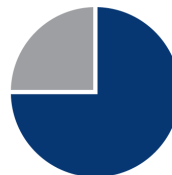
Percent of students whose PSAT test scores indicate they are college and career ready. Percent of student population who are enrolled in at least one advanced course.



PSAT Reading **94%**



PSAT Math **66.4%**



Pre AP/AP enrolled **75%**

CLUBS

Clubs provide opportunities for students to engage in learning of their choice beyond the classroom. Some of ours include Book Club, Science Olympiad, Calligraphy Club, Math Club, Student Council, National Junior Honor Society, and Robotics Club.

COMMON SENSE SCHOOL



Earning the Common Sense School badge is a symbol of our school's dedication and commitment to helping students think critically and use technology responsibly to learn, create, and participate.

PROGRAMS

Our campus offers unique programs to help our students become better learners, leaders, and friends.

Some of our programs include Advanced Spanish and LISD STEM Academy.

ARTS AND ATHLETICS



99%
Participation in athletics or physical education

82%
Participation in fine arts such as music and art

AWARDS AND RECOGNITIONS

- National PTA School of Excellence 2020-2022
- At the Top with BrainPOP Award
- 8th Grade Girls Basketball Division 1 Co-champions
- 8th Grade Girls Basketball Division 2 Champions
- 8th Grade Girls Division 2 Volleyball Champions
- Band UIL Sweepstakes Award
- Choir UIL Sweepstakes Award



What do our parents think?

In April 2021, parents were surveyed about the campus their child attends. Values represent the percentage of respondents who agree. Based on 202 responses.

Are satisfied overall	89.1%
The school staff cares	91.1%
Students know how to get help	85.6%
I know about my child's grades	90.6%
School is safe	94.6%
Students are happy	89.6%
Staff is encouraging	89.1%
Students who fall behind can get help	85.6%
School work is important	84.2%
Students feel welcomed	88.6%
School communicates effectively	84.2%
The staff is approachable	92.1%
They value culture and individual needs	87.6%

FORESTWOOD MIDDLE SCHOOL
Home of the Falcons
Flower Mound, Texas

Jennifer Hawes, Principal



McKamy Middle School

Campus Profile

SCHOOL HOURS ONLINE

8:55 a.m. to 4:10 p.m. **GRADES** 6th through 8th grade
lisd.net/mckamy | facebook.com/mckamymms | twitter.com/McKamyMS

STUDENT INFORMATION

806 Students
97.6% Average daily attendance

STAFF INFORMATION

63.42 Total staff members
15.8 Average number of years teaching experience
12 Average number of years teaching in LISD schools

PROFESSIONAL LEARNING

Total number of hours the staff spent developing their job skills last year

4,672



Average professional learning hours per Lewisville ISD staff member

417

OBSERVATION

Number of administrator visits to observe class instruction

139 Average number of classroom visits per administrator

At McKamy Middle School, we believe in:

- Learning in partnership with our community
- Nurturing the intellectual, social and emotional growth of one another

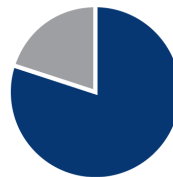
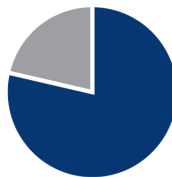
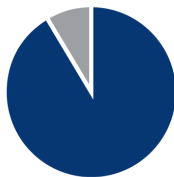
Our passion is to empower courageous and compassionate learners who embrace challenge and innovation, think critically and reflectively, value diverse collaboration, and conscientiously care for the world they create.



ACADEMIC PERFORMANCE

PSAT SCORES AND ADVANCED COURSES

Percent of students whose PSAT test scores indicate they are college and career ready. Percent of student population who are enrolled in at least one advanced course.

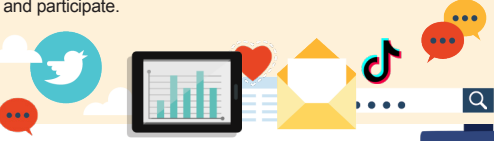


CLUBS

Clubs provide opportunities for students to learn beyond the classroom. Some of our clubs include National Junior Honor Society, Chess Club, Student2Student, Interact Club, International Junior Thespan Society, Robotics, Book Club, Yearbook, Student Council, Cheer/Pom, FCA, Writers' Club, Green Planet, and Spanish Club.

COMMON SENSE SCHOOL

Earning the Common Sense School badge is a symbol of our school's dedication and commitment to helping students think critically and use technology responsibly to learn, create, and participate.



PROGRAMS

Our campus offers unique programs to help our students grow. Some of ours include No Place for Hate, Robotics, McKamy Reads, Kindness Ambassadors, UIL Academics Competition, Athletics, Band, Choir, Orchestra, Game of Life Simulation, Culturally U-Knighted Event, Project-Based Learning with expert advisors.

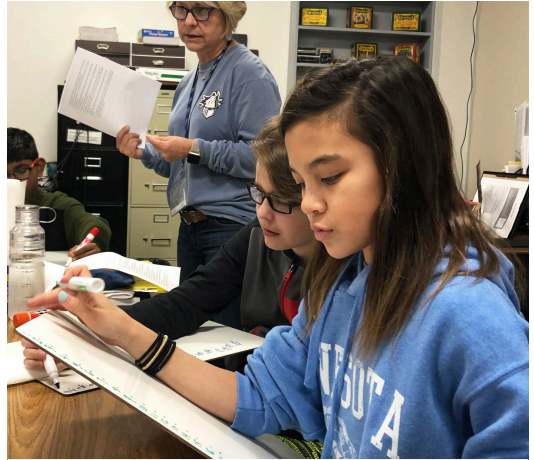


ARTS AND ATHLETICS



100%
Participation in athletics or physical education

77%
Participation in fine arts such as music and art



What do our parents think?

In April 2021, parents were surveyed about the campus their child attends. Values represent the percentage of respondents who agree. Based on 207 responses.

Are satisfied overall	94.2%
The school staff cares	96.1%
Students know how to get help	94.2%
I know about my child's grades	92.8%
School is safe	95.2%
Students are happy	93.2%
Staff is encouraging	95.7%
Students who fall behind can get help	89.9%
School work is important	90.8%
Students feel welcomed	95.2%
School communicates effectively	93.2%
The staff is approachable	96.1%
They value culture and individual needs	93.7%

AWARDS AND RECOGNITIONS

- CREST Award
- Common Sense School
- No Place for Hate Campus
- National Spelling Bee Champion
- National PTA School of Excellence
- Academic UIL grade level winners
- Ron and Marilyn Allee Cup Winner (three years)
- UIL sweepstakes honors for choir, band and orchestra
- Best of Denton County Public Middle School
- Destination Imagination National Finalist
- Texas PTA Reflections Finalist
- TSA/Vex National Award winners

MCKAMY MIDDLE SCHOOL

Home of the Knight
Flower Mound, Texas

Kelly Knight, Principal



Shadow Ridge Middle School Campus Profile

SCHOOL HOURS ONLINE

8:55 a.m. to 4:10 p.m.
lisd.net/shadowridge

GRADES 6th through 8th grade

facebook.com/shadowridgems | twitter.com/ShadowRidgeMS

STUDENT INFORMATION

630	Students
97.3%	Average daily attendance

STAFF INFORMATION

59.67	Total staff members
12.9	Average number of years teaching experience
10	Average number of years teaching in LISD schools

PROFESSIONAL LEARNING

Total number of hours the staff spent developing their job skills last year

4,335



Average professional learning hours per Lewisville ISD staff member

284

OBSERVATION

Number of administrator visits to observe class instruction

95 Average number of classroom visits per administrator

Welcome to Shadow Ridge Middle School where "Pride is an Everyday Thing"

Our staff is committed to providing students engaging, innovative learning experiences every day.

We believe:

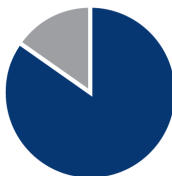
- Our students are unique and capable learners who flourish in our safe and flexible environment
- Our students benefit from challenging activities that enhance critical thinking, problem solving, and creative thinking in a collaborative setting
- Our students connect to the world outside of our building through the use of technology and community partnerships

Students at Shadow Ridge consistently demonstrate excellence academically, athletically and in the fine arts. We have an incredible staff that is here to provide a nurturing, safe and inclusive environment where students experience engaging, innovative lessons that lead to profound learning.

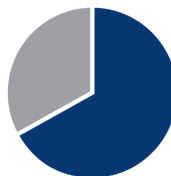
ACADEMIC PERFORMANCE

PSAT SCORES AND ADVANCED COURSES

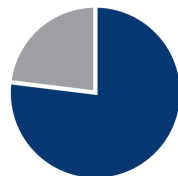
Percent of students whose PSAT test scores indicate they are college and career ready. Percent of student population who are enrolled in at least one advanced course.



PSAT Reading **84.9%**



PSAT Math **67.2%**



Pre AP/AP enrolled **77%**

CLUBS

Clubs provide opportunities for students to learn beyond the classroom. Our clubs include National Junior Honor Society, Student Council, Chess Club, Art Club, UIL Academics, Book Club, FCA, Circle of Friends, Coding Club and Destination Imagination.

COMMON SENSE SCHOOL



Earning the Common Sense School badge is a symbol of our school's dedication and commitment to helping students think critically and use technology responsibly to learn, create, and participate.



PROGRAMS

Our campus offers unique programs to help our students become better learners, leaders, and friends. Some of ours include ESL, G/T, MTA, Digital Citizenship, NJHS Mentoring Program, Character Counts, Kindness Campaign, and High School Course Offerings.



ARTS AND ATHLETICS



97%
Participation in athletics or physical education

90%
Participation in fine arts such as music and art

AWARDS AND RECOGNITIONS

- District Athletic Championships
- District, Region, State Award winning Honor Winds and Symphonic Bands
- National Award Winning Honor Winds Band
- Sweepstakes Winning Choir
- Sweepstakes Winning Orchestra
- Award Winning Theater Arts Productions
- State Qualifying Destination Imagination Team
- Outstanding Student Council Sweepstakes
- Common Sense School



What do our parents think?

In April 2021, parents were surveyed about the campus their child attends. Values represent the percentage of respondents who agree. Based on 161 responses.

Are satisfied overall	92.5%
The school staff cares	91.9%
Students know how to get help	88.2%
I know about my child's grades	90.1%
School is safe	97.5%
Students are happy	95.0%
Staff is encouraging	92.5%
Students who fall behind can get help	83.9%
School work is important	88.2%
Students feel welcomed	89.4%
School communicates effectively	89.4%
The staff is approachable	91.9%
They value culture and individual needs	89.4%

SHADOW RIDGE MIDDLE SCHOOL
Home of the Panthers
Flower Mound, Texas

Gary Gibson, Principal



Bluebonnet Elementary School

Campus Profile

SCHOOL HOURS ONLINE

7:45 a.m. to 3 p.m. **GRADES** Kindergarten through 5th grade
lisd.net/bluebonnet | facebook.com/bluebonnetes | twitter.com/BluebonnetES

STUDENT INFORMATION

510	Students
97%	Average daily attendance

STAFF INFORMATION

44.37	Total staff members
17.9	Average number of years teaching experience
12.5	Average number of years teaching in LISD schools

PROFESSIONAL LEARNING

Total number of hours the staff spent developing their job skills last year

3,970

77.8

Average professional learning hours per Lewisville ISD staff member



OBSERVATION

194

Number of administrator visits to observe class instruction

97 Average number of classroom visits per administrator

At Bluebonnet Elementary, we believe:

- Students have the opportunity to excel to their highest potential
- Students are given opportunities to be risk-takers and creative thinkers
- Students will embrace real-life experiences on their journey to becoming lifelong learners

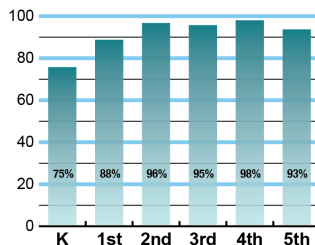
We are devoted to providing every student with the academic and social skills to be successful throughout their life. Our partnership with our families, staff and community is vital to the academic and social success of our students.



ACADEMIC PERFORMANCE

Istation by grade level

Lewisville ISD monitors students' reading progress through the Istation computer program. Teachers can quickly assess which students need help. This chart shows the percent of students reading on grade level or showing six months growth at the end of the school year.



CLUBS

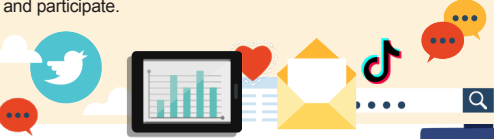
Students engage in learning of their choice beyond the classroom through clubs.

Some of our clubs include Student Council, Bear Patrol, KPAW, and Show Choir.

COMMON SENSE SCHOOL



Earning the Common Sense School badge is a symbol of our school's dedication and commitment to helping students think critically and use technology responsibly to learn, create, and participate.



PROGRAMS

Our campus offers unique programs to help our students become better learners, leaders, and friends.

Some of our programs include Kid with Character, Second Steps, and Restorative Practices.



ARTS AND ATHLETICS



100%
Participation in athletics or physical education

100%
Participation in fine arts such as music and art

AWARDS AND RECOGNITIONS

- Town of Flower Mound Chamber of Commerce School of the Month May 2021
- PTA Golden Apple Award
- National PTA School of Excellence
- Common Sense Certified School



What do our parents think?

In April 2021, parents were surveyed about the campus their child attends. Values represent the percentage of respondents who agree. Based on 251 responses.

Are satisfied overall	96.0%
The school staff cares	98.4%
Students know how to get help	95.6%
I know about my child's grades	97.6%
School is safe	98.8%
Students are happy	98.4%
Staff is encouraging	98.4%
Students who fall behind can get help	93.6%
School work is important	96.8%
Students feel welcomed	96.0%
School communicates effectively	97.2%
The staff is approachable	96.0%
They value culture and individual needs	96.4%

BLUEBONNET ELEMENTARY SCHOOL

Home of the Bears
Flower Mound, Texas

Lana D. Fisher, Principal





Donald Elementary School

STEM Campus Profile

SCHOOL HOURS ONLINE

7:45 a.m. to 3:25 p.m. **GRADES** Kindergarten through 5th grade
lisd.net/donald | facebook.com/donalelementary | twitter.com/Donald_ES

STUDENT INFORMATION

580 Students
97.1% Average daily attendance

STAFF INFORMATION

56.41 Total staff members
13.9 Average number of years teaching experience
10.9 Average number of years teaching in LISD schools

PROFESSIONAL LEARNING

Total number of hours the staff spent developing their job skills last year

4,793

77.3

Average professional learning hours per Lewisville ISD staff member



OBSERVATION

187

Number of administrator visits to observe class instruction

94 Average number of classroom visits per administrator

At Donald Elementary, we believe that:

- Students should be provided engaging real-world learning experiences
- Students are continually challenged through risk-taking and varied opportunities
- Students are provided a learning environment that is safe and supportive in order to be successful

Donald Elementary's vision is to support a positive and engaging learning environment that fosters collaboration, critical thinking and creativity where everyone can achieve their personal best. At Donald, we address the needs of the whole child, both academic and social emotional. We provide after school enrichment opportunities through Dolphin Time to showcase talents not always seen in the classroom. We are committed to developing lifelong learners prepared for a productive life in a future they create.

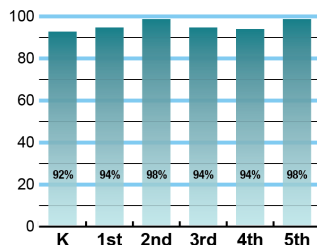
In 2018, Donald Elementary became the first nationally certified campus for STEM Excellence in Texas.



ACADEMIC PERFORMANCE

Istation by grade level

Lewisville ISD monitors students' reading progress through the Istation computer program. Teachers can quickly assess which students need help. This chart shows the percent of students reading on grade level or showing six months growth at the end of the school year.



CLUBS

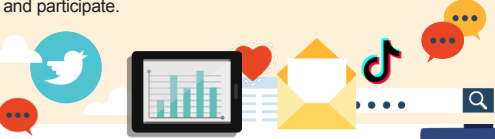
Students engage in learning of their choice beyond the classroom through clubs.

In our clubs 4th and 5th grade students have the opportunity to participate in Student Council, LISD Kindness Ambassadors, and KKIDS News.

COMMON SENSE SCHOOL



Earning the Common Sense School badge is a symbol of our school's dedication and commitment to helping students think critically and use technology responsibly to learn, create, and participate.



PROGRAMS

Our campus offers a variety of programs to give all students unique and individualized opportunities for growth. All students participate in STEM instructions daily, and students rotate through weekly instruction in Physical Education, Music, Art, and Computer Science.



ARTS AND ATHLETICS



100%
Participation in athletics or physical education

100%
Participation in fine arts such as music and art

AWARDS AND RECOGNITIONS

- 2019-2021 TSCA CREST Award
- 2021 ASCA School of Excellence Award
- 2018-2020 TEPSA Student Council Honor Award
- PTA Gold Voice for Every Child
- PTA Golden Apple Award
- PTA MARS
- 2020-2021 Common Sense Media Certified Campus
- 2018 First Nationally Certified School for STEM Excellence in Texas



What do our parents think?

In April 2021, parents were surveyed about the campus their child attends. Values represent the percentage of respondents who agree. Based on 159 responses.

Are satisfied overall	95.6%
The school staff cares	96.2%
Students know how to get help	93.1%
I know about my child's grades	93.7%
School is safe	98.7%
Students are happy	96.9%
Staff is encouraging	98.1%
Students who fall behind can get help	91.2%
School work is important	91.8%
Students feel welcomed	93.1%
School communicates effectively	91.8%
The staff is approachable	95.0%
They value culture and individual needs	93.1%

DONALD ELEMENTARY STEM ACADEMY

Home of the Dolphins
Flower Mound, Texas

Heather Shorter, Principal



Forest Vista Elementary School

Campus Profile

SCHOOL HOURS 7:45 a.m. to 3 p.m. **GRADES** Kindergarten through 5th grade
ONLINE lisd.net/forestvista | facebook.com/forestvista | twitter.com/ForestVistaES

STUDENT INFORMATION

477 Students
97.3% Average daily attendance

STAFF INFORMATION

58.42 Total staff members
12.7 Average number of years teaching experience
10 Average number of years teaching in LISD schools

PROFESSIONAL LEARNING

Total number of hours the staff spent developing their job skills last year

5,087

79.5

Average professional learning hours per Lewisville ISD staff member

270

OBSERVATION

Number of administrator visits to observe class instruction

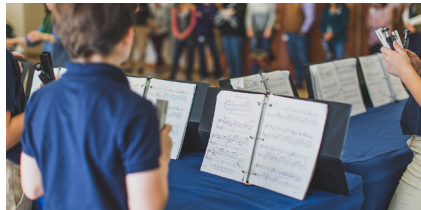
90 Average number of classroom visits per administrator

At Forest Vista Elementary, we believe:

- Every student can learn
- Reading is the foundation for learning
- Differentiated education is necessary
- Parent support and involvement are important

We have a dedicated group of professional educators, a good group of students eager to learn, and parents who are supportive of the school and active in their child's education. Our campus is known for a high level of academic performance.

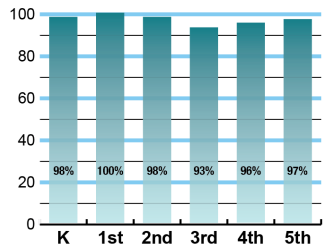
Our campus maintains strong music and art programs. We have a supportive Special Education staff. Forest Vista's library is well stocked in books to engage the children in reading, in addition to a reading enrichment program. We have readily available technology and appropriate training. We also have an active and supportive PTA.



ACADEMIC PERFORMANCE

Istation by grade level

Lewisville ISD monitors students' reading progress through the Istation computer program. Teachers can quickly assess which students need help. This chart shows the percent of students reading on grade level or showing six months growth at the end of the school year.



CLUBS

Students engage in learning of their choice beyond the classroom through clubs. Ours include Choir (4th & 5th grades), Running Club (4th and 5th grades), Art Club (5th grade), Chess Club (3rd, 4th, and 5th grades), Chimes (5th grade) and Student Council.

COMMON SENSE SCHOOL



Earning the Common Sense School badge is a symbol of our school's dedication and commitment to helping students think critically and use technology responsibly to learn, create, and participate.



What do our parents think?

PROGRAMS

Our campus offers unique programs to help our students become better learners, leaders, and friends. Some of ours include ICARE Character Education Program, Accelerated Reader Enrichment Program, Student Safety Patrol Group, and Student Buddies.



In April 2021, parents were surveyed about the campus their child attends. Values represent the percentage of respondents who agree. Based on 145 responses.

Are satisfied overall	97.2%
The school staff cares	97.2%
Students know how to get help	93.8%
I know about my child's grades	93.1%
School is safe	99.3%
Students are happy	97.2%
Staff is encouraging	97.2%
Students who fall behind can get help	93.1%
School work is important	95.2%
Students feel welcomed	96.6%
School communicates effectively	95.2%
The staff is approachable	95.9%
They value culture and individual needs	95.9%

ARTS AND ATHLETICS



100%
Participation in athletics or physical education

100%
Participation in fine arts such as music and art

AWARDS AND RECOGNITIONS

- TEPSA Student Leadership Award 2019, 2018
- Choir invited to perform at Texas Music Educators Association 2020 conference
- Chamber of Commerce School of the Month April 2019
- PTA Golden Apple Award 2019, 2018
- ENERGY STAR certified school
- LEF Campus Excellence Grant 2017

FOREST VISTA ELEMENTARY SCHOOL

Home of the Eagles
Flower Mound, Texas

Dr. Patrick Schott, Principal



Garden Ridge Elementary School

Campus Profile

SCHOOL HOURS ONLINE

7:45 a.m. to 3 p.m. **GRADES** Kindergarten through 5th grade
lisd.net/gardenridge | facebook.com/gardenridgees | twitter.com/GardenRidgeES

STUDENT INFORMATION

370 Students
97.4% Average daily attendance

STAFF INFORMATION

50.79 Total staff members
12.3 Average number of years teaching experience
9.7 Average number of years teaching in LISD schools

PROFESSIONAL LEARNING

Total number of hours the staff spent developing their job skills last year

4,309

78.3

Average professional learning hours per Lewisville ISD staff member



OBSERVATION

628 Number of administrator visits to observe class instruction

314 Average number of classroom visits per administrator

At Garden Ridge Elementary we believe:

- Students should be provided engaging real-world learning experiences.
- Students are challenged through risk taking and varied opportunities.
- Students are provided a learning environment that is safe and supportive in order to be successful.

At Garden Ridge Elementary we are committed to developing 21st-century learners.

All students have the opportunity to engage in inclusive experiences that ensure each child has the academic skills and social emotional support needed to be successful.

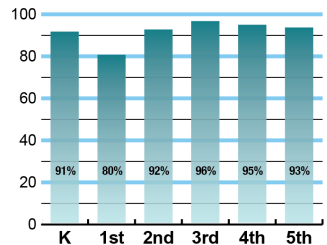
Through hands-on activities, community partnerships, field trips, and real-world experiences students are challenged to push beyond themselves in order to have more meaningful and relevant learning experiences.

Staff at Garden Ridge Elementary are passionate about learning and striving to help students reach their fullest potential.

ACADEMIC PERFORMANCE

Istation by grade level

Lewisville ISD monitors students' reading progress through the Istation computer program. Teachers can quickly assess which students need help. This chart shows the percent of students reading on grade level or showing six months growth at the end of the school year.



CLUBS

Clubs provide opportunities for students to engage in learning of their choice beyond the classroom.

Some of ours include Coding Club, Art Club, Student Council, Running Club, Choir, Broadcast Team, and Fuel Up to Play 60.

COMMON SENSE SCHOOL

Earning the Common Sense School badge is a symbol of our school's dedication and commitment to helping students think critically and use technology responsibly to learn, create, and participate.



PROGRAMS

Our unique programs help our students grow. Some of ours are Hands On CPR and choking training, Gator Pals Mentoring Program, Magical Sightings, Circle of Friends, Creator Gator, WATCH Dogs, Counselor Corner, Multicultural Night and Curriculum Nights.



ARTS AND ATHLETICS



100%
Participation in athletics or physical education

97%
Participation in fine arts such as music and art

AWARDS AND RECOGNITIONS

- Kindness Certified School
- CREST
- LEF Grants to teachers
- Texas School Counseling Association (TSCA) Campus Administrator of the Year
- TSCA Elementary Counselor of the Year
- TSCA Counselor Advocate of the Year
- ENERGY STAR certified school
- Common Sense School
- Elementary First Year Teacher of the Year



What do our parents think?

In April 2021, parents were surveyed about the campus their child attends. Values represent the percentage of respondents who agree. Based on 118 responses.

Are satisfied overall	94.9%
The school staff cares	96.6%
Students know how to get help	91.5%
I know about my child's grades	95.8%
School is safe	95.8%
Students are happy	94.9%
Staff is encouraging	95.8%
Students who fall behind can get help	89.8%
School work is important	94.1%
Students feel welcomed	86.4%
School communicates effectively	90.7%
The staff is approachable	90.7%
They value culture and individual needs	88.1%

GARDEN RIDGE ELEMENTARY SCHOOL

Home of the Gators
Flower Mound, Texas

Kelly Roden, Principal



Liberty Elementary School

Campus Profile

SCHOOL HOURS 7:45 a.m. to 3 p.m. **GRADES** Pre-K through 5th grade
ONLINE lisd.net/liberty | facebook.com/libertyes | twitter.com/LibertyES

STUDENT INFORMATION

474 Students
97.2% Average daily attendance

STAFF INFORMATION

50.85 Total staff members
16.5 Average number of years teaching experience
12.8 Average number of years teaching in LISD schools

PROFESSIONAL LEARNING

Total number of hours the staff spent developing their job skills last year

4,749



Average professional learning hours per Lewisville ISD staff member

151

OBSERVATION

Number of administrator visits to observe class instruction

76 Average number of classroom visits per administrator

At Liberty Elementary School, we believe:

- Creating a learning environment that is safe, motivating, and challenging
- Everyone can reach their full potential by developing life-long skills of respect, leadership, responsibility, and cooperation
- High expectations will be maintained as we move forward with pride in our accomplishments and a strong desire to excel
- All stakeholders will come together to set new goals that will assist the students of Liberty Elementary School in becoming learners for life

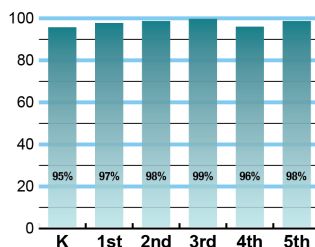
Daily expectations for students include being **READY** to learn, prepared, and focused each day; **RESPECTFUL** of themselves, others, and school at all times; and **RESPONSIBLE** for following the expectations in all aspects of their lives. Liberty Eagles will soar higher with commitment, determination, hard work, and kindness.

Full family involvement is welcomed at our campus and happens through communicating regularly with school, walking to the main entrance each school day, sharing lunch in the cafeteria, being a class mystery reader, small group tutoring, volunteering in the classroom, chaperoning a field trip, and assisting with classroom celebrations. Pride and commitment in self, family, community, state, and nation through demonstrated citizenship skills and practices are at the core of our campus history and expectations.

ACADEMIC PERFORMANCE

Istation by grade level

Lewisville ISD monitors students' reading progress through the Istation computer program. Teachers can quickly assess which students need help. This chart shows the percent of students reading on grade level or showing six months growth at the end of the school year.



CLUBS

Clubs provide opportunities for students to engage in learning of their choice beyond the classroom.

Some of our clubs include Liberty Student Council, Liberty Eagle Choir, Green Squad, News Team, Puzzle Club and Volleyball Club.

COMMON SENSE SCHOOL



Earning the Common Sense School badge is a symbol of our school's dedication and commitment to helping students think critically and use technology responsibly to learn, create, and participate.



PROGRAMS

Our campus offers unique programs to help our students grow. Some of ours include PTA, Discovery Academy, STEM, Gifted and Talented, Language Science (Dyslexia), Language Acquisition (ELL/ESL), Speech Therapy, Special Education, and Extended School Day.



ARTS AND ATHLETICS



100%
Participation in athletics or physical education

100%
Participation in fine arts such as music and art



What do our parents think?

In April 2021, parents were surveyed about the campus their child attends. Values represent the percentage of respondents who agree. Based on 153 responses.

Are satisfied overall	96.1%
The school staff cares	98.7%
Students know how to get help	98.0%
I know about my child's grades	96.7%
School is safe	98.7%
Students are happy	97.4%
Staff is encouraging	98.7%
Students who fall behind can get help	94.8%
School work is important	96.1%
Students feel welcomed	96.1%
School communicates effectively	97.4%
The staff is approachable	96.7%
They value culture and individual needs	96.7%

AWARDS AND RECOGNITIONS

- National PTA School of Excellence 2020-2022
- National Association of Elementary School Principals Honor Student Council School of Excellence
- National Common Sense Digital Education Certified School
- Best of Denton County Student Choice Public Elementary School
- Lewisville Education Foundation Grant for CPR Teaching Equipment
- Texas PTA Golden Apple Award (100% membership)
- Texas PTA MARS Award (50 or more male members)

LIBERTY ELEMENTARY SCHOOL

Home of the Eagles
Flower Mound, Texas

Tim Greenwell, Principal



Old Settlers Elementary School

Campus Profile

SCHOOL HOURS 7:45 a.m. to 3 p.m. **GRADES** Kindergarten through 5th grade
ONLINE lisd.net/oldsettlers | facebook.com/oldsettlerses | twitter.com/OldSettlersES

STUDENT INFORMATION

520 Students
96.9% Average daily attendance

STAFF INFORMATION

54.73 Total staff members
14.2 Average number of years teaching experience
10.4 Average number of years teaching in LISD schools

PROFESSIONAL LEARNING

Total number of hours the staff spent developing their job skills last year

4,434

71.5

Average professional learning hours per Lewisville ISD staff member



OBSERVATION

209 Number of administrator visits to observe class instruction

105 Average number of classroom visits per administrator

Our commitment to students:

At Old Settlers Elementary, we are proud to be the start of a child's education as we prepare them for their journey to college and career readiness. The OSE staff is devoted to academic achievement while developing strong student/teacher relationships based on our OSE Core Values:

- S** – Spirit of Gratitude
- T** – Treasured Relationships
- A** – Academic Achievement
- R** – Respectful Communication
- S** – Supportive Community

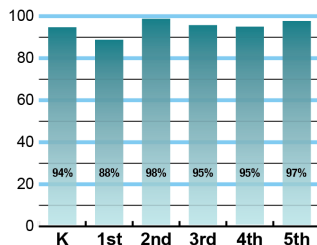
Our successes are a result of boundless positive energy, genuine dedication, and an amazing commitment toward teaching and learning from the Old Settlers students, staff, parents and community.

We acknowledge our responsibility to nurture and develop each individual child so they acquire the essential skills needed to solve real-world problems while working collaboratively in a rapidly changing and diverse world.

ACADEMIC PERFORMANCE

Istation by grade level

Lewisville ISD monitors students' reading progress through the Istation computer program. Teachers can quickly assess which students need help. This chart shows the percent of students reading on grade level or showing six months growth at the end of the school year.



CLUBS

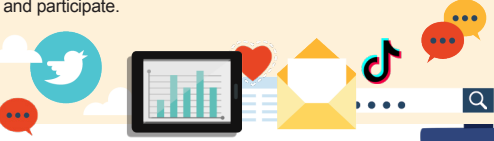
Clubs provide opportunities for students to engage in learning of their choice beyond the classroom.

Some of ours include State Recognized Student Council, Giving Tree (Community Service Club), French Club, Newscasters, OSE Ambassadors, Choir, and Morning Greeters.

COMMON SENSE SCHOOL



Earning the Common Sense School badge is a symbol of our school's dedication and commitment to helping students think critically and use technology responsibly to learn, create, and participate.



PROGRAMS

Our campus offers unique programs to help our students become better learners, leaders, and friends.

Some of our programs include SHINE Time, Star Stories, Destination Imagination, OSE Student of the Month, Walk for Diabetes, and Watch D.O.G.S.



ARTS AND ATHLETICS



100%
Participation in athletics or physical education

100%
Participation in fine arts such as music and art

AWARDS AND RECOGNITIONS

- TEPSA Student Leadership Award 2017-2018
- ENERGY STAR certified school
- LISD Teacher of the Year from OSE 2013-14, 2014-15, 2016-17
- Destination Imagination Team - 3rd Place 2017
- Multiple LEF teacher and campus grant awards
- 2nd grade student advanced to the state PTA Reflections contest



What do our parents think?

In April 2021, parents were surveyed about the campus their child attends. Values represent the percentage of respondents who agree. Based on 154 responses.

Are satisfied overall	94.8%
The school staff cares	94.8%
Students know how to get help	90.3%
I know about my child's grades	88.3%
School is safe	96.8%
Students are happy	96.1%
Staff is encouraging	94.8%
Students who fall behind can get help	89.0%
School work is important	93.5%
Students feel welcomed	92.2%
School communicates effectively	87.7%
The staff is approachable	92.2%
They value culture and individual needs	89.6%

OLD SETTLERS ELEMENTARY SCHOOL

Home of the Stars
Flower Mound, Texas

Dr. Kelly Hayunga, Principal



Wellington Elementary School

Campus Profile

SCHOOL HOURS ONLINE

7:45 a.m. to 3 p.m. **GRADES** Pre-K through 5th grade
lisd.net/wellington | facebook.com/wellingtones | twitter.com/wellington_elem

STUDENT INFORMATION

800 Students
97.4% Average daily attendance

STAFF INFORMATION

68.95 Total staff members
15.6 Average number of years teaching experience
10.9 Average number of years teaching in LISD schools

PROFESSIONAL LEARNING

Total number of hours the staff spent developing their job skills last year

5,590

79.9

Average professional learning hours per Lewisville ISD staff member

421

OBSERVATION
 Number of administrator visits to observe class instruction

140 Average number of classroom visits per administrator

At Wellington Elementary, we pursue:

- Perseverance
- Partnership
- Potential

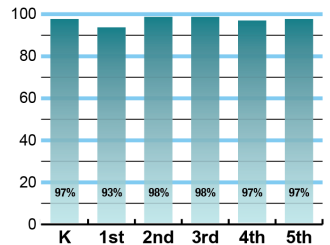
Wellington Elementary, in partnership with home and community, will promote a safe, positive, and nurturing environment that is dedicated to meeting the needs of all students. We are passionate about developing the potential of each child by using a curriculum that is aligned with state standards, designed to develop higher-level thinking skills, and create a desire for lifelong learning. Our students have a growth mindset, which allows them to persevere and accomplish their goals and become 21st-Century learners.



ACADEMIC PERFORMANCE

Istation by grade level

Lewisville ISD monitors students' reading progress through the Istation computer program. Teachers can quickly assess which students need help. This chart shows the percent of students reading on grade level or showing six months growth at the end of the school year.



CLUBS

Students engage in learning of their choice beyond the classroom through clubs. Ours include Kindness Ambassadors, Student Council, Jump Rope Club, Fuzzy Cats, Young Rembrandts, A Lil' Bit of Broadway, Wize Academy Coding, Sapphires Dance Club, Lego Love Club, Architecture Club, and Honor Choir.

COMMON SENSE SCHOOL

Earning the Common Sense School badge is a symbol of our school's dedication and commitment to helping students think critically and use technology responsibly to learn, create, and participate.



PROGRAMS

Our campus offers unique programs to help our students become better learners, leaders, and friends. Some of ours include Spanish Immersion Program, PAW Pals, Gifted and Talented, WatchDogs, Language Science (MTA), Student Council, Athletes for Literacy, ESL, Special Education, and Extended School Day.



ARTS AND ATHLETICS



100%
Participation in athletics or physical education

99%
Participation in fine arts such as music and art

AWARDS AND RECOGNITIONS

- Common Sense Media Award for 2019-2021
- Best of Denton County: Best Public Elementary School 2014, 2015, 2016, 2018 and 2020
- Best of Denton County: Best Kindergarten 2016 and 2017
- Best of Denton County: Best Public School Teacher: 2017, 2018, and 2020
- Robotics Team placed 6th in Area 11 TCEA 2018
- District Teacher of the Year 2017-2018
- LEF Award: Technology and STEM
- Flower Mound Chamber of Commerce School of the Month 2018, 2019
- CREST Award for 2018, 2019, 2020



What do our parents think?

In April 2021, parents were surveyed about the campus their child attends. Values represent the percentage of respondents who agree. Based on 262 responses.

Are satisfied overall	94.7%
The school staff cares	96.6%
Students know how to get help	95.4%
I know about my child's grades	96.2%
School is safe	98.9%
Students are happy	97.7%
Staff is encouraging	97.3%
Students who fall behind can get help	92.4%
School work is important	95.4%
Students feel welcomed	90.8%
School communicates effectively	96.2%
The staff is approachable	96.6%
They value culture and individual needs	95.8%

WELLINGTON ELEMENTARY SCHOOL

Home of the Wildcats
Flower Mound, Texas

Tami Braun, Principal



Visit us online for more information about the best schools in Texas.



lisd.net/realtor

